

# Picture Pairs

## Final Blends

Print onto white paper. Cut out individual rectangles and mount on coloured card one eighth of an A4 sheet. Mount the pictures on one colour and the words on a different colour. Make the cards into as many games as you wish - keeping to one final blend or several.

To Play

Lay the cards out face down in rows. Players to choose one card of each colour. If the picture and word match, keep the pair.



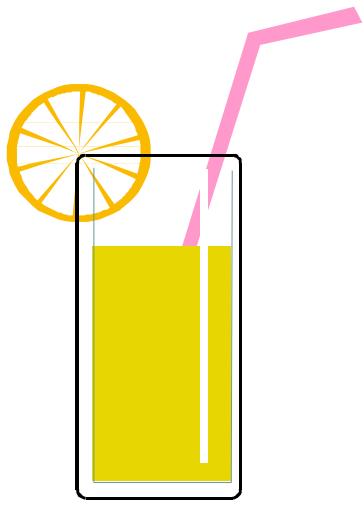
tent



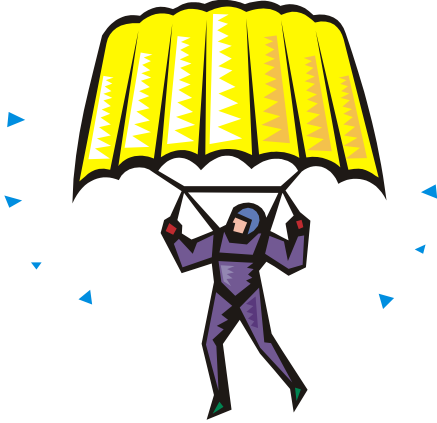
wind



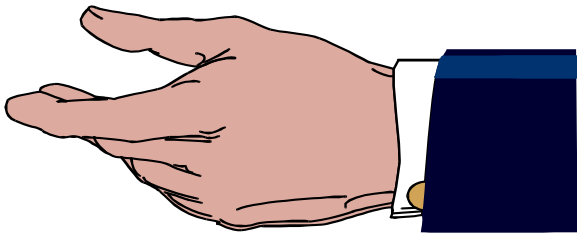
ink



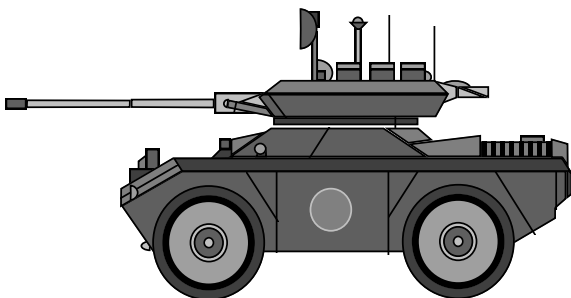
drink



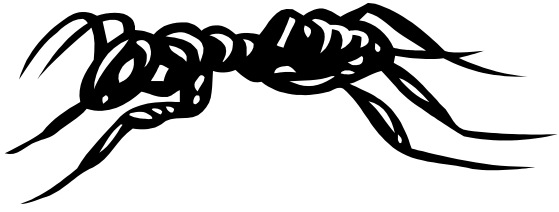
hang



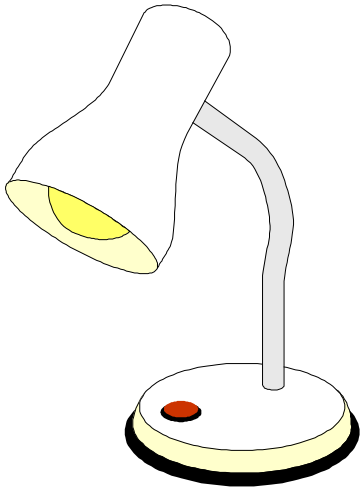
hand



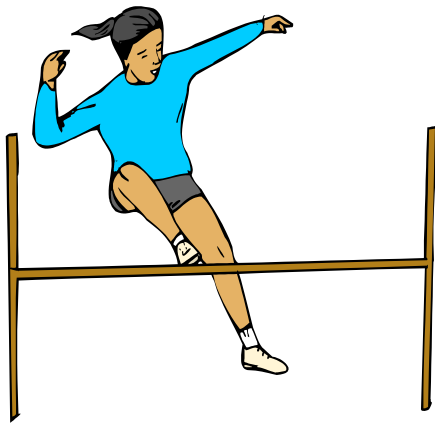
tank



ant



lamp



jump



trunk



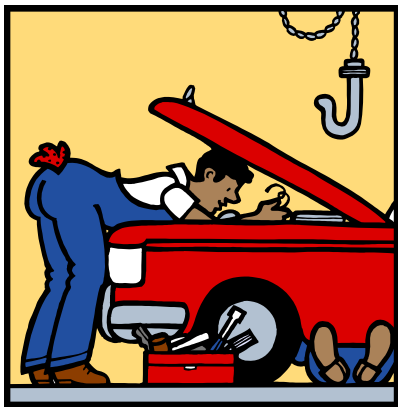
pond



pink



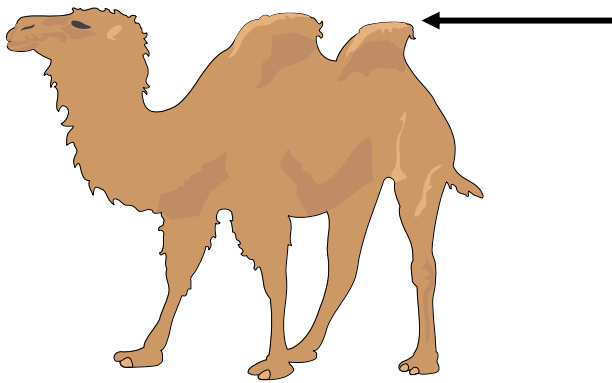
chimp



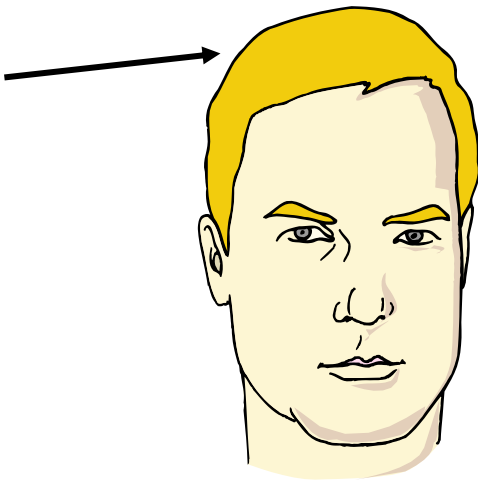
mend



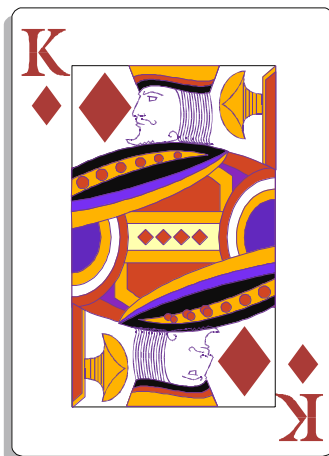
hunt



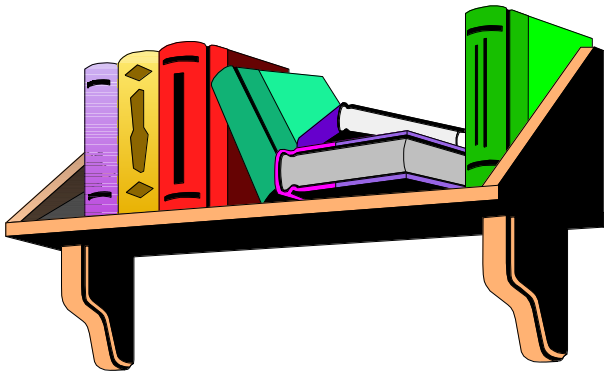
hump



blond



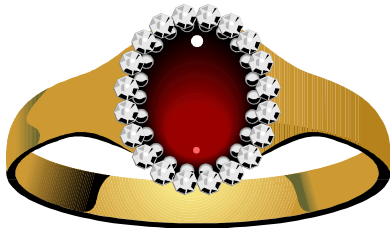
king



shelf



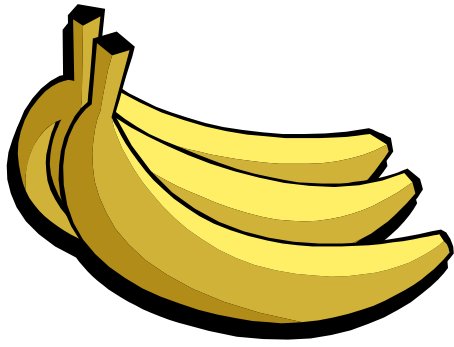
swing



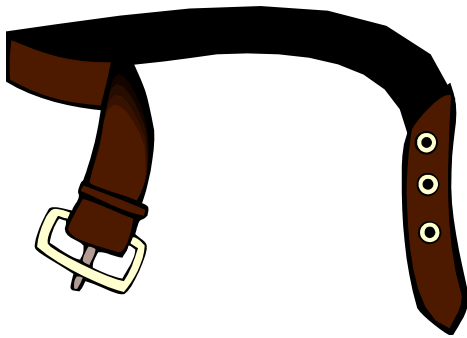
ring



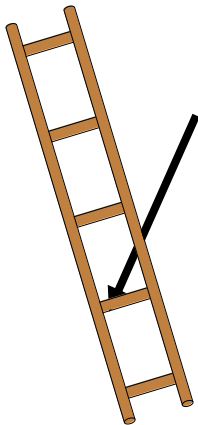
sand



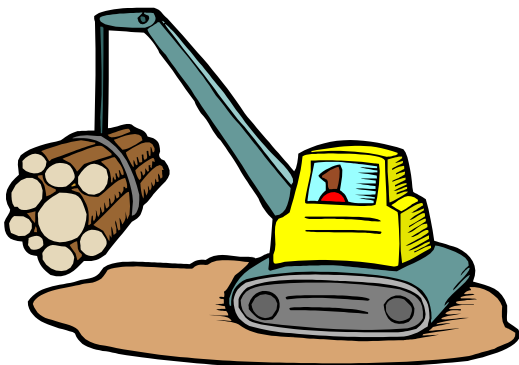
bunch



belt



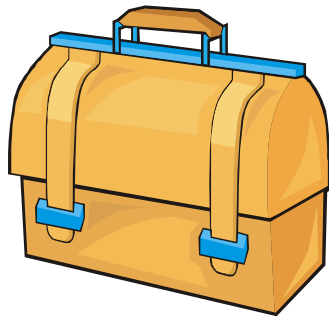
rung



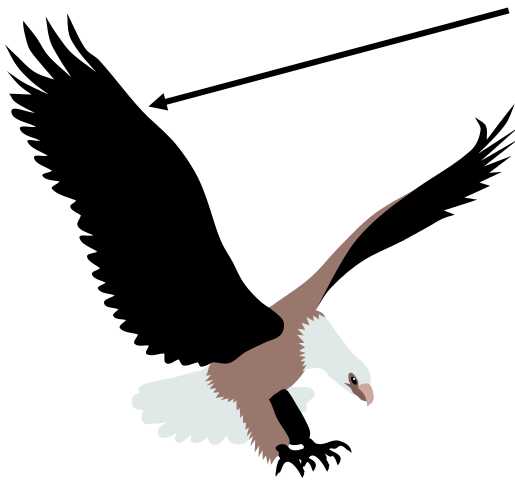
lifting



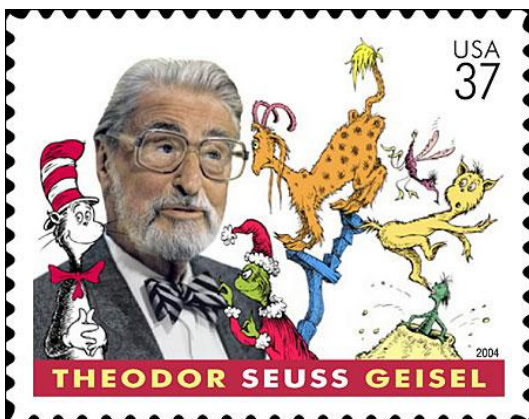
singing



lunch box



wing



stamp





band



sink



fishing



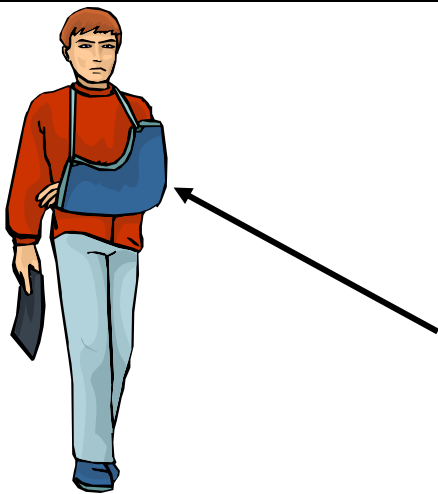
bend



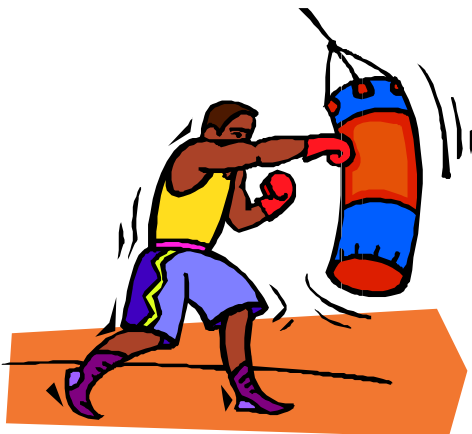
string



milk



sling



punch



handbag



strong



bunk beds



bench



film